

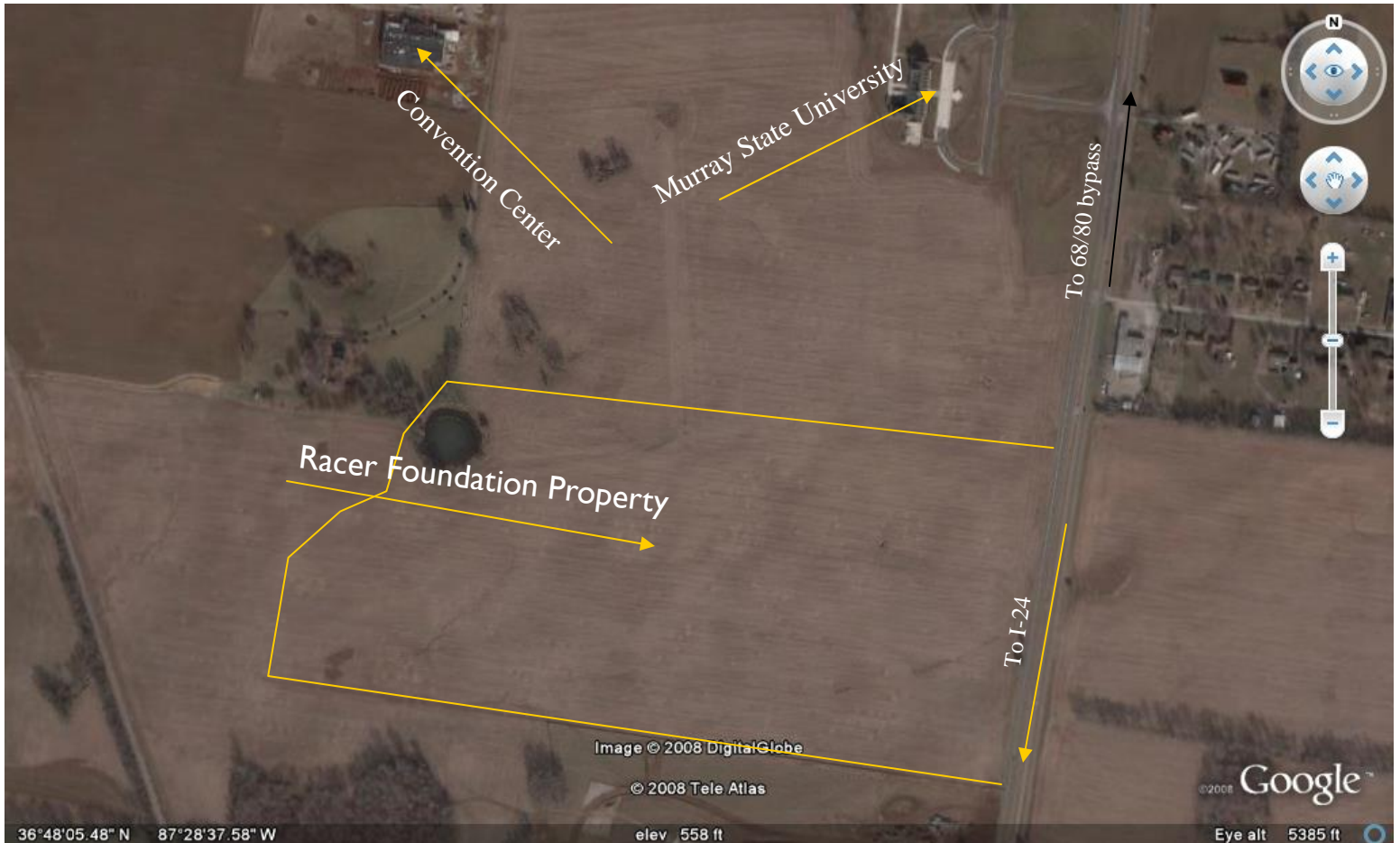
# Racer Foundation HWY 41A

## US HWY 41A - Hopkinsville, KY

(38° 48' 01.28" N 87° 28' 38.97" W)

- ◆ 13 acre site with great access
- ◆ Utilities at road
- ◆ Access to Pennyriple Parkway Extension and I-24
- ◆ 4-lane access
- ◆ Rolling terrain—easily developed

For more information  
Contact  
Chuck Jones  
Cell-270.767.3228



**HOPKINSVILLE**  
CHRISTIAN COUNTY  
ECONOMIC DEVELOPMENT COUNCIL

Kim Schippers, Executive Director  
Hopkinsville/Christian County Economic Development Council  
2400 Fort Campbell Boulevard Hopkinsville, KY 42240  
(270) 885-1499 [kschippers@hopkinsvilleindustry.com](mailto:kschippers@hopkinsvilleindustry.com)  
[www.hopkinsvilleindustry.com](http://www.hopkinsvilleindustry.com)