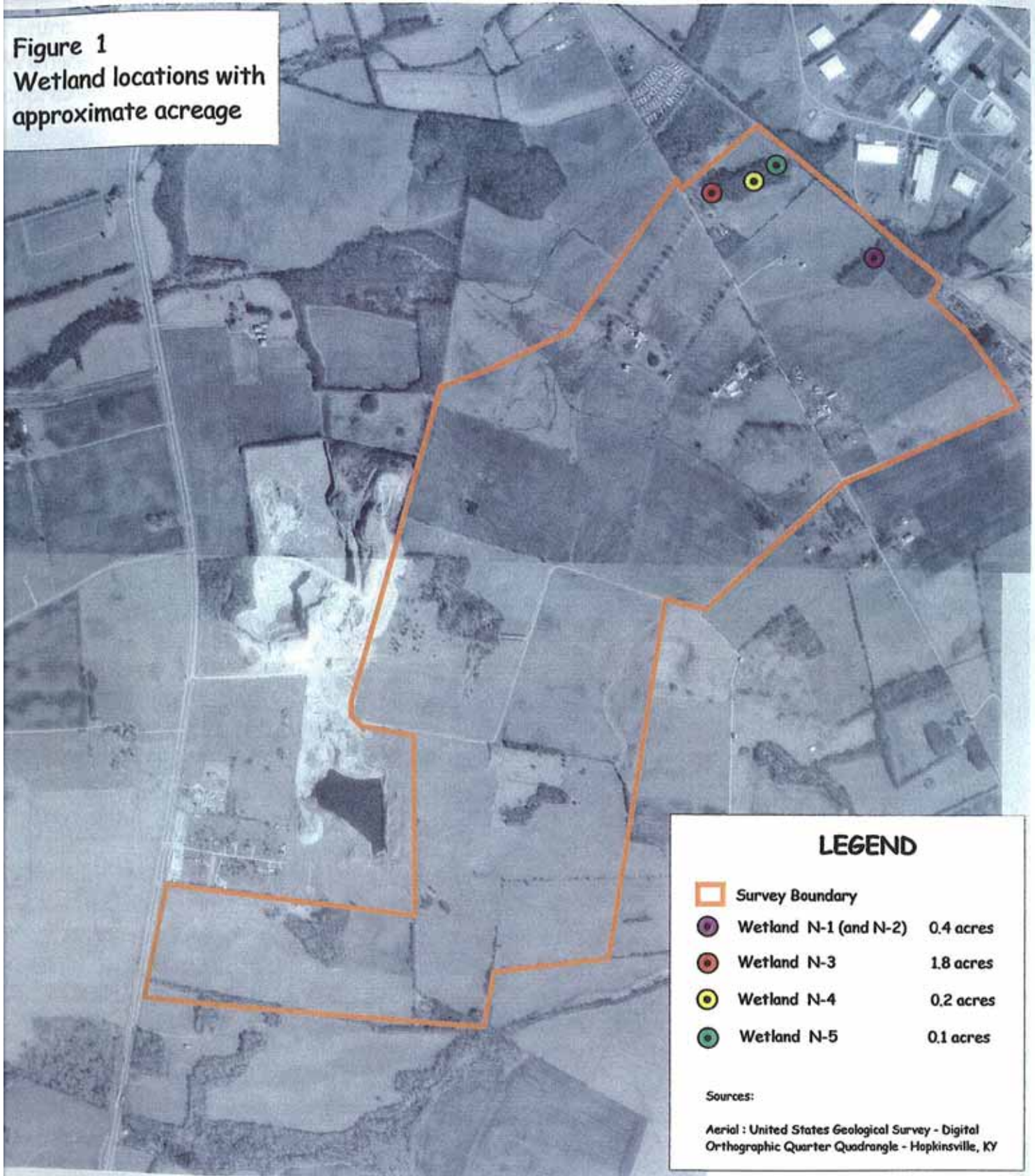







Figure 1  
Wetland locations with  
approximate acreage



### LEGEND

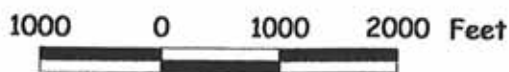
-  Survey Boundary
-  Wetland N-1 (and N-2) 0.4 acres
-  Wetland N-3 1.8 acres
-  Wetland N-4 0.2 acres
-  Wetland N-5 0.1 acres

Sources:

Aerial : United States Geological Survey - Digital  
Orthographic Quarter Quadrangle - Hopkinsville, KY



SCALE = 1:16,500

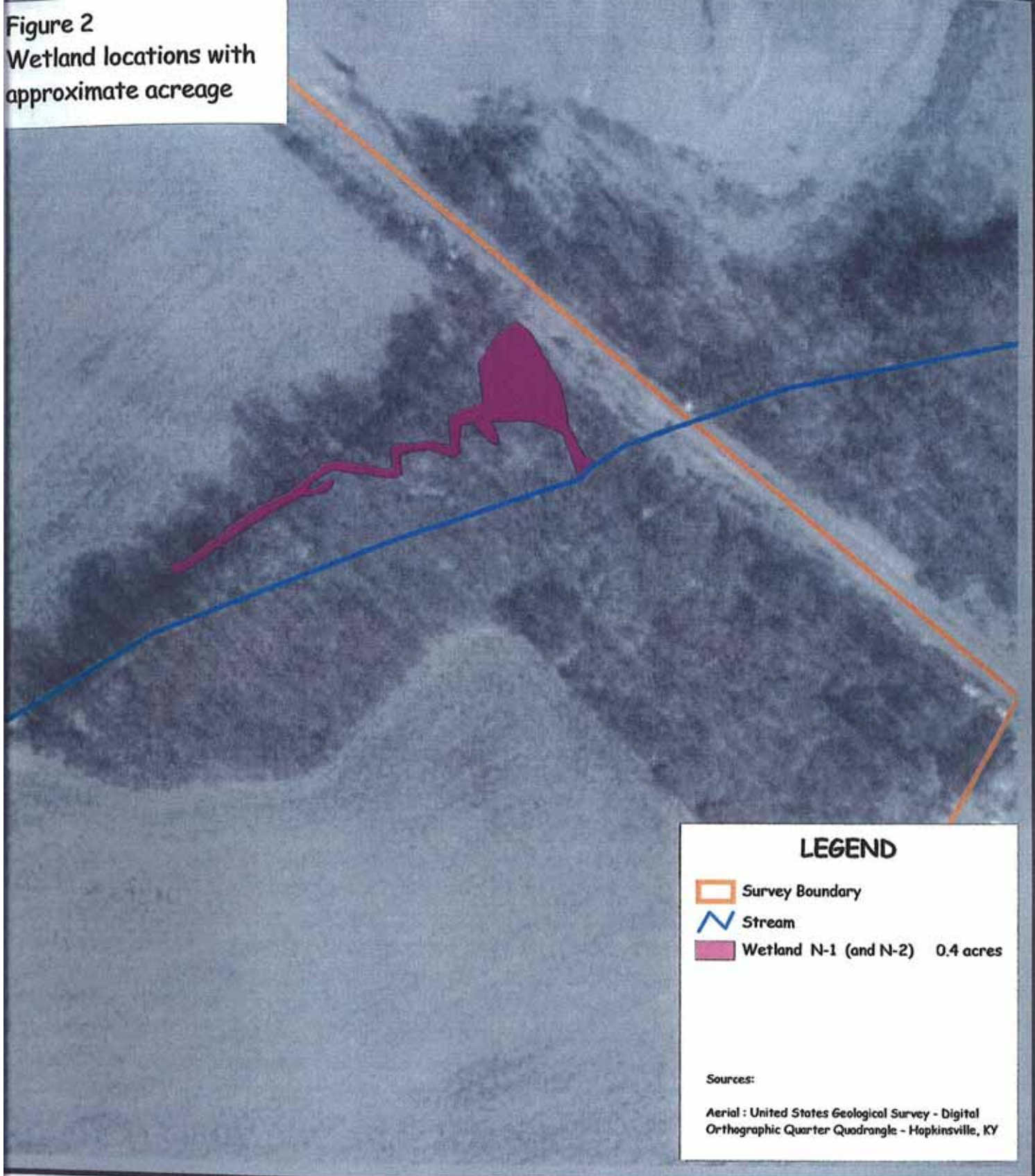


*Environmental Consultants Specializing in Streams, Wetlands and Protected Species*




98 Mark Selby Private Drive  
Decatur, Alabama 35603  
(256) 340-9774

[www.upacreekenterprises.com](http://www.upacreekenterprises.com)

Figure 2  
Wetland locations with  
approximate acreage



### LEGEND

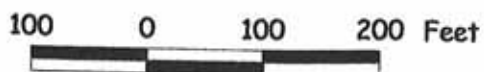
-  Survey Boundary
-  Stream
-  Wetland N-1 (and N-2) 0.4 acres

Sources:

Aerial : United States Geological Survey - Digital  
Orthographic Quarter Quadrangle - Hopkinsville, KY



SCALE = 1:2,000



*Environmental Consultants Specializing in Streams, Wetlands and Protected Species*

98 Mark Selby Private Drive  
Decatur, Alabama 35603  
(256) 340-9774  
[www.upacreekenenterprises.com](http://www.upacreekenenterprises.com)