



The Shopping Center Group®

Retail Real Estate Specialists®

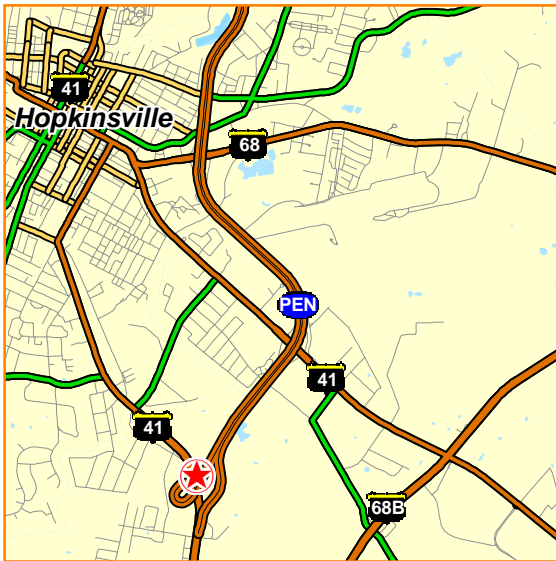
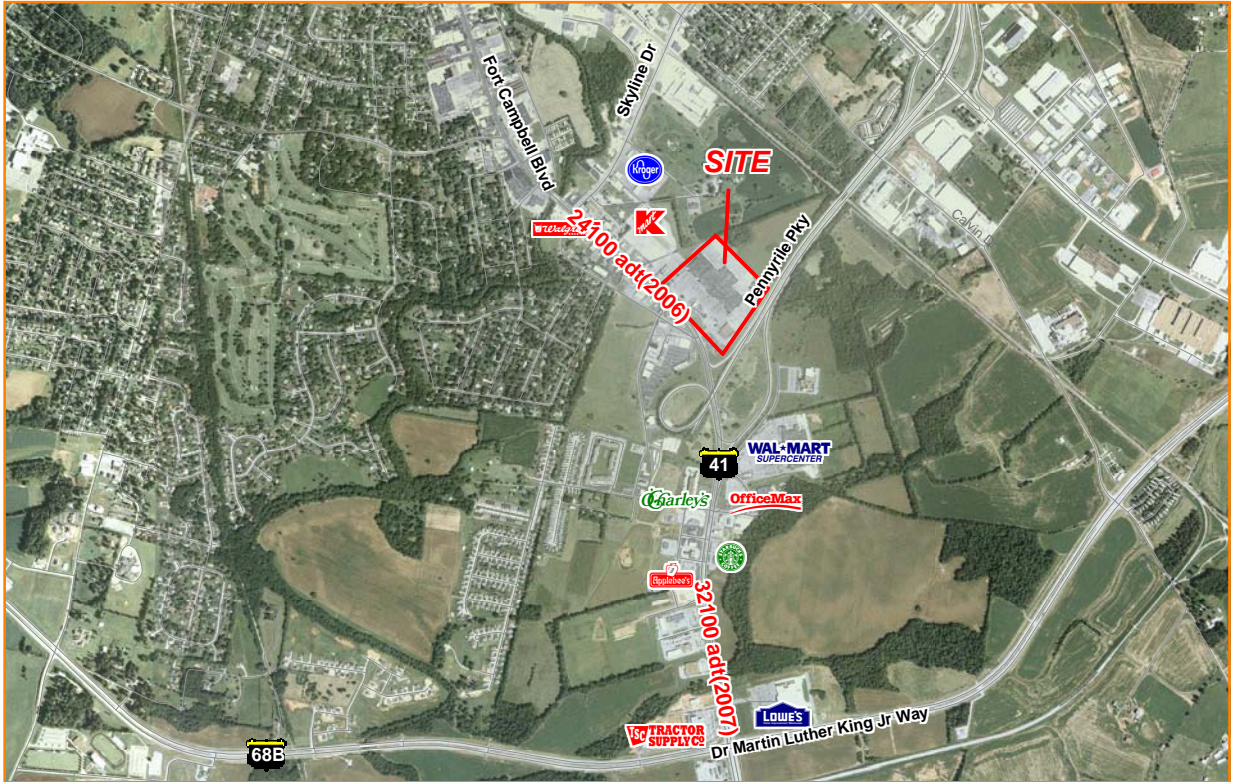
Bradford Square

4000 Ft. Campbell Boulevard (US 41A)

320,000 SF REGIONAL SHOPPING CENTER



Hopkinsville, KY - Christian County



PROPERTY HIGHLIGHTS

- Located at US 41A & Pennyriple Pkwy
- CO-TENANTS: Peebles, JC Penney, Hibbett Sports, The Shoe Dept., Bath & Body Works
- AREA RETAILERS: Wal-Mart Supercenter, KMart, Office Max, Tractor Supply, Lowe's
- Traffic Counts - US Hwy 41A: 32,100 adt
- Christian County Population: 73,000
- KY Sales Tax: 6% vs. TN Sales Tax: 9.75% (Approx. 20 miles from Tennessee State Line)
- 20 miles from Ft. Campbell Military Reservation, home to 26,500 active duty soldiers

For More Information Call:

Primary Kevin Mayhugh

Agent: 502.753.0080

kevinm@theshoppingcentergroup.com



No warranty expressed or implied has been made as to the accuracy of the information provided herein, no liability assumed for error or omissions

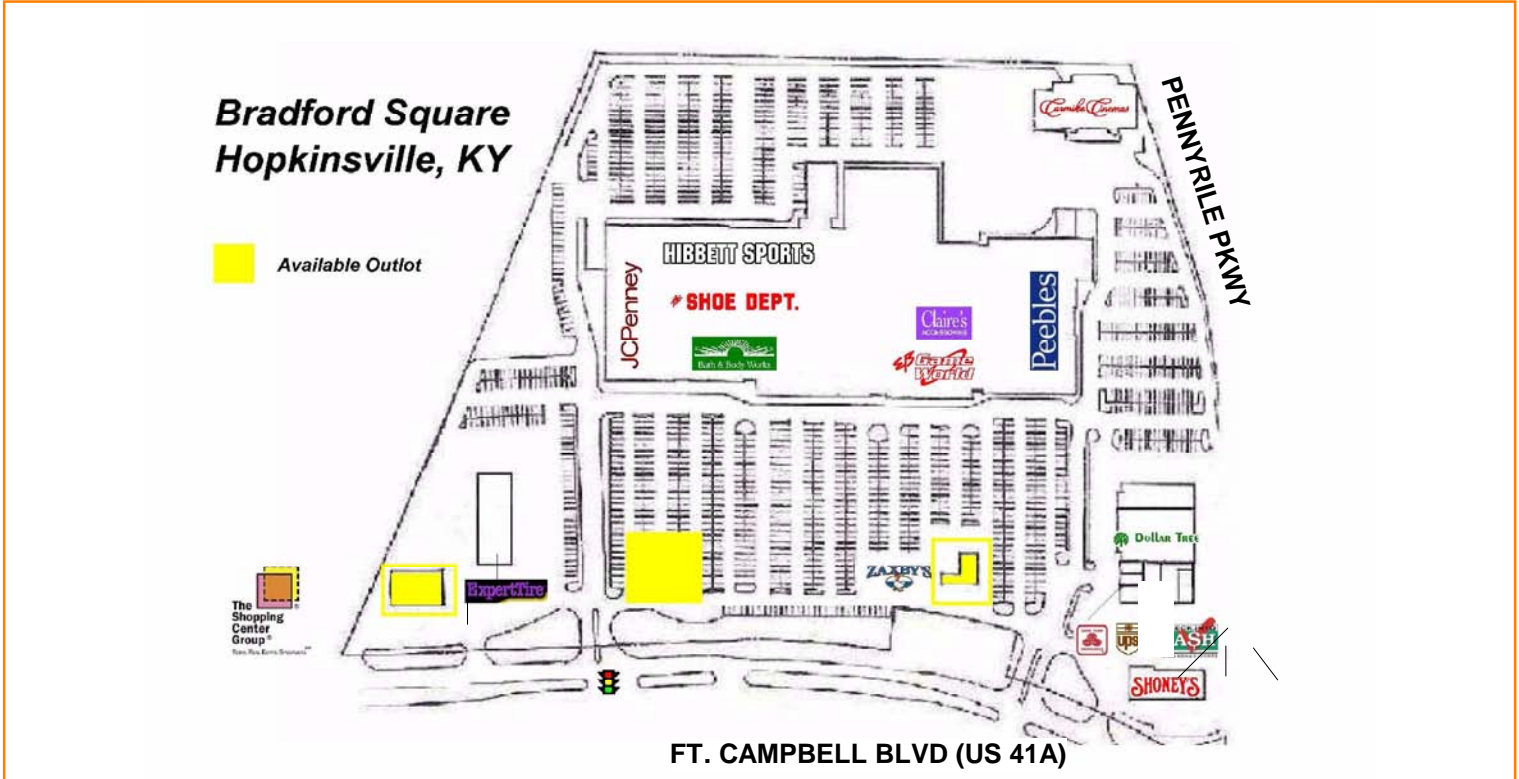
For Lease



For Lease

4000 Ft. Campbell Blvd.

Hopkinsville, Kentucky



DEMOGRAPHICS*	1-Mile	3-Miles	5-Miles
Population	1,469	19,339	30,860
Avg. HH Income	\$52,740	\$48,568	\$47,990
Number of Households	618	7,883	12,278

For More Information Call:

Primary Agent:

Kevin Mayhugh

502.753.0080

kevinm@theshoppingcentergroup.com



*Applied Geographic Solutions, 2008 Estimates, USPS Postal Counts. KDOT Estimates Rev. 4/16/09